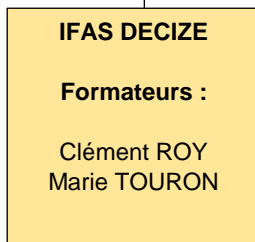
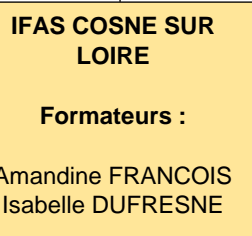
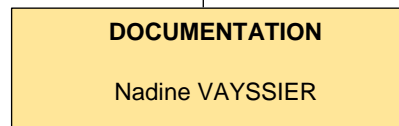
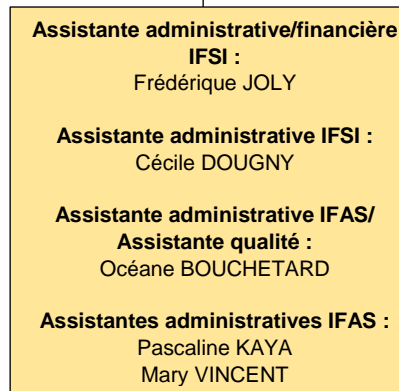
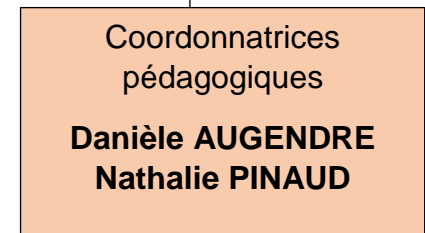
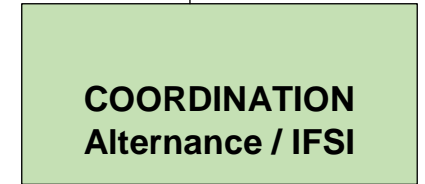
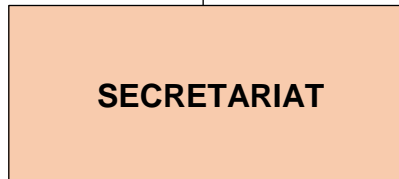
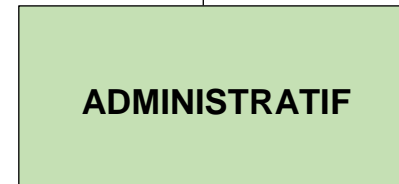
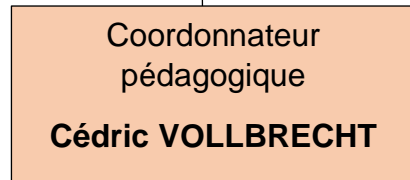
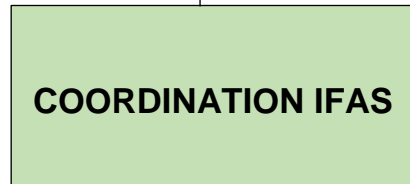
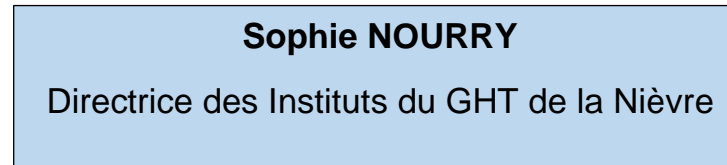


ORGANIGRAMME STRUCTUREL DES INSTITUTS DU GHT DE LA NIEVRE



Fonctions supports :

- Direction générale : **M. Jean-François SEGOVIA**
- Secrétariat général : **M. Yannick CHARTIER**
- Direction des Ressources Humaines : **Mme Manon KHALFI**
- Direction de l'équipement, des travaux, des services économiques et logistiques : **M. Benoit MARBOTTE**
- Direction des affaires financières et du système d'information : **Mme Marion RAVET**
- Direction des affaires générales de la qualité, des relations avec les usagers et de la communication : **Mme Marie-Pierre SILVESTRE-TOUSSAINT**
- Direction de la coordination générale des soins : **Mme Magali GIRON**